

# MONTHLY MEMBERSHIP PROGRESS REPORT

LOCATION INDIA

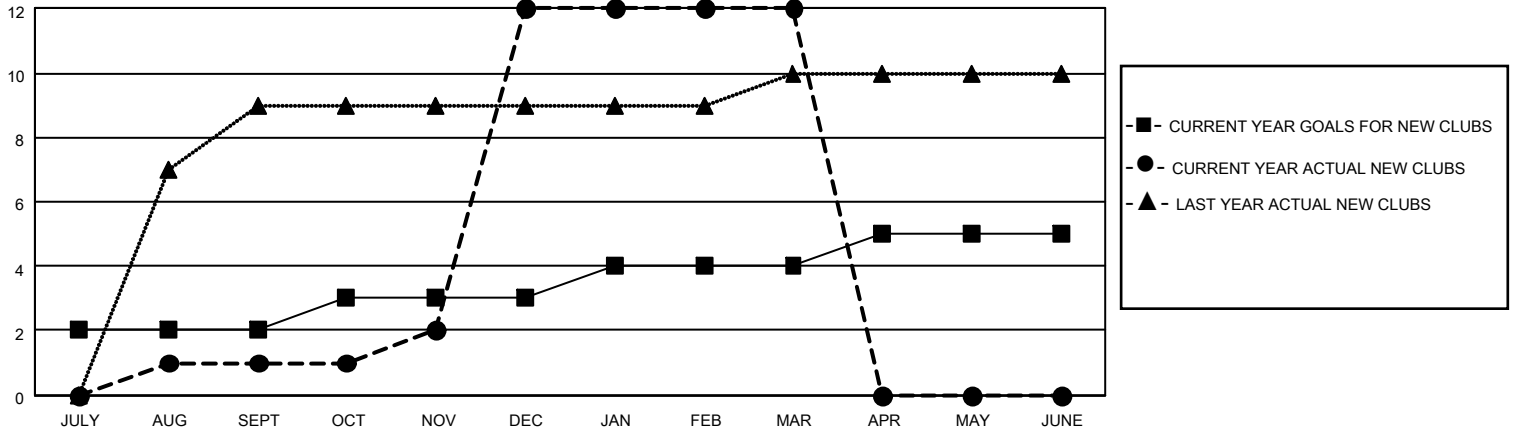
District 322 B2

Results as of: 3/31/2021

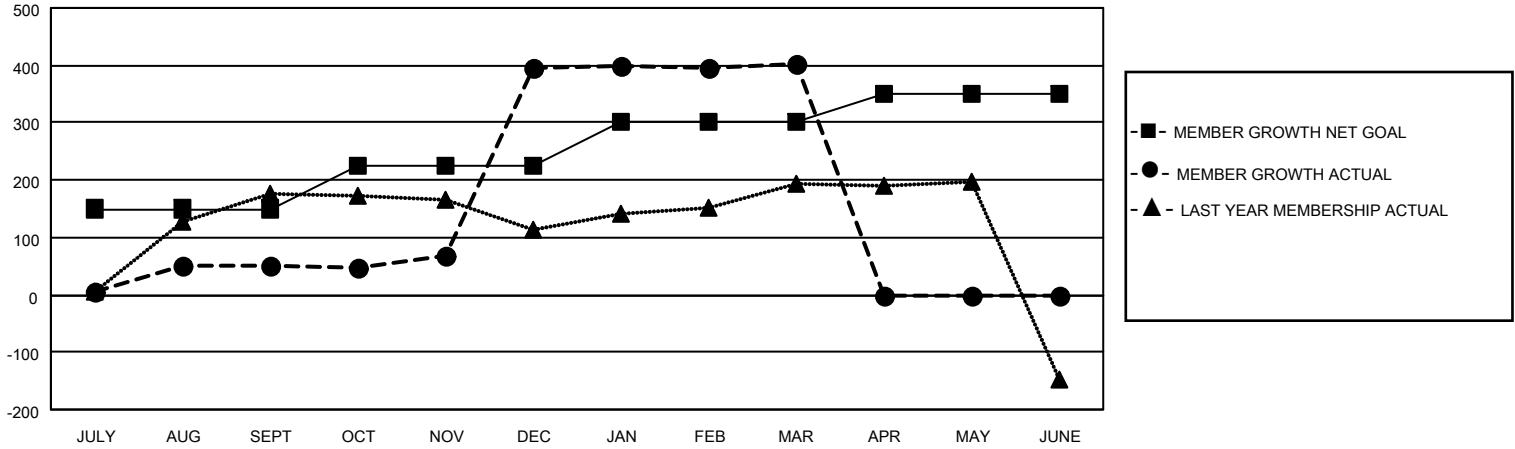
Clubs			
RESULTS FOR 2020-2021			
QUARTER	NEW CLUB GOAL	NEW CLUBS	DROPPED CLUBS
JULY/AUG/SEPT	2	1	1
OCT/NOV/DEC	1	11	0
JAN/FEB/MAR	1	0	2
APR/MAY/JUNE	1	0	0

Members			
RESULTS FOR 2020-2021			
QUARTER	MEMBER GROWTH NET GOAL	MEMBER GROWTH ACTUAL	DROPPED MEMBERS ACTUAL (including transfers)
JULY/AUG/SEPT	150	70	15
OCT/NOV/DEC	75	509	159
JAN/FEB/MAR	75	33	19
APR/MAY/JUNE	50	0	0

**GOALS AND ACTUAL NEW CLUBS CUMULATIVE**



**GOALS AND ACTUAL MEMBERS CUMULATIVE**



DROPPED CLUBS: 3	57 CLUBS OF 91 ADDED 1 OR MORE NEW MEMBERS	<u>GENDER DISTRIBUTION</u>
<u>DROPPED MEMBERS</u>	<a href="#">CLICK HERE FOR CUMULATIVE MEMBERSHIP DATA</a>	MALE            2,062 (67.39%)
DECEASED            14		FEMALE         998 (32.61%)
CLUB CANCELLED       5		TOTAL FAMILY UNIT MEMBERS            1,583
OTHER                 173		FAMILY MEMBERS PAYING HALF DUES            981
<b>TOTAL                 192</b>		